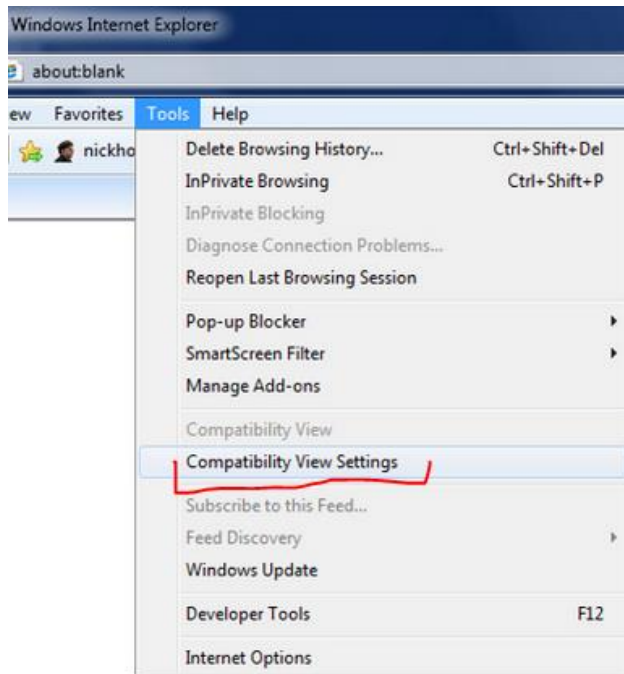
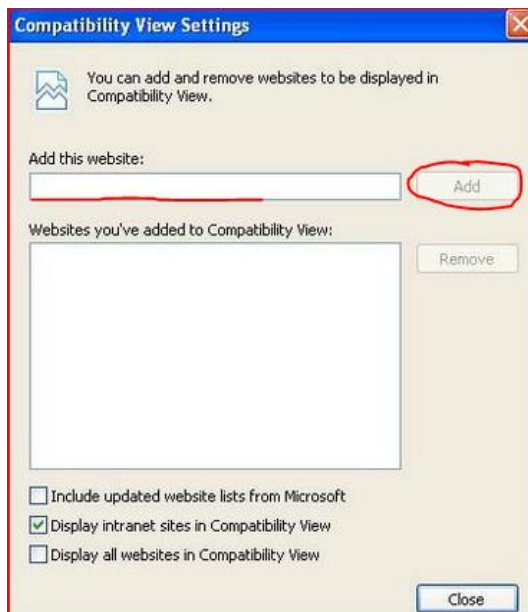


## How to use Compatibility View for IES in Windows Internet Explorer

In order to correct functioning the application Information Exchange System (IES) in Windows Internet Explorer, essential is to turn on Compatibility View. Please click Compatibility View Settings on the Tools menu. If you do not see the Tools menu in IE, press ALT.



In the Compatibility View Settings windows, type the address of the webpage: **gaz-system.pl** and then click Add.



After that, close all open browser windows and restart Internet Explorer browser. Then the application Information Exchange System will run correctly.